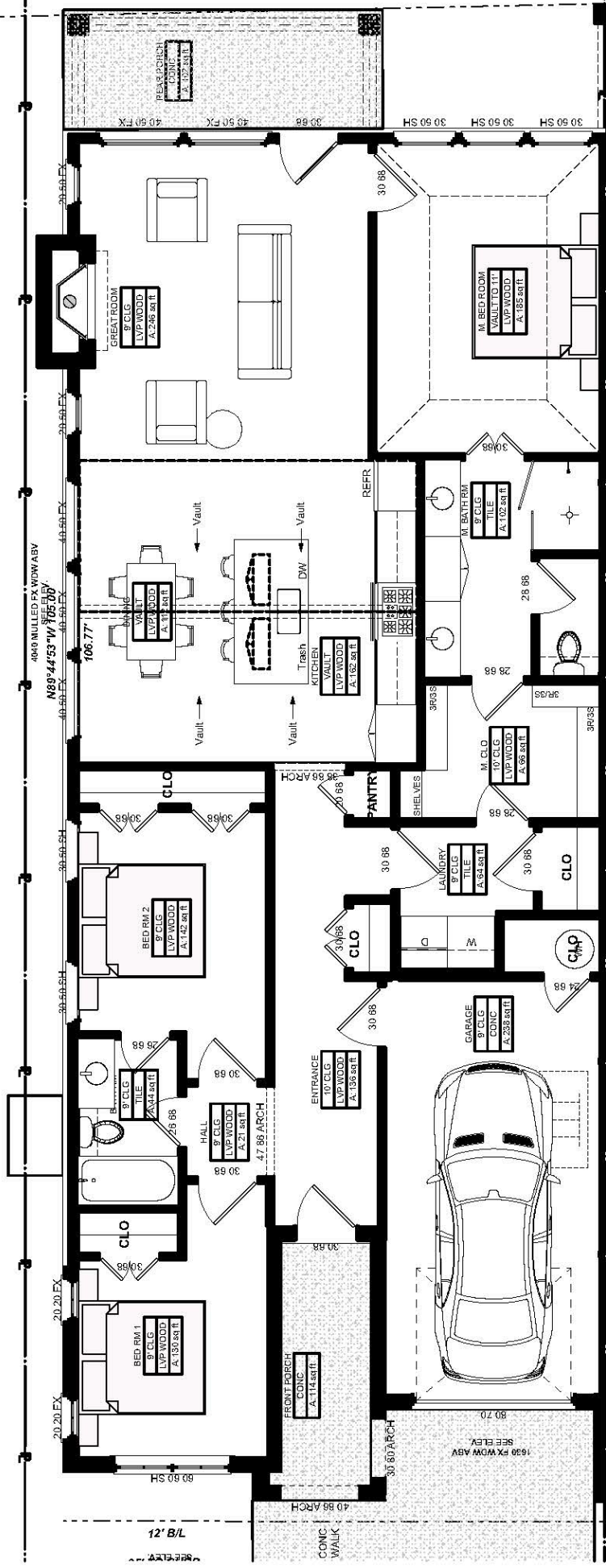


© 2022 These plans are the sole property of Spectacular Homes LLC. All Rights Reserved. No part of these plans may be reproduced or transmitted in any form or by any means, electronic or mechanical, including photocopy, without permission in writing by Spectacular Homes LLC. Violators will be prosecuted to the full extent of the law.



PLAN 'A'

1594 SF
 276 SF Garage
 3 Bedroom 2 Bath

Outstanding Features

- Built By Award Winning Spectacular Homes
- Covered Front Porch
- 17' Vaulted Kitchen and Living Space
- Open Floor Plan
- Large Island Granite Top Kitchen
- Walk-in Pantry
- Luxury Vinyl Wood Look Flooring Throughout
- Large 12sqft Walk-in Master Closet.
- 3 Rows/3 Seasons Closet Pull Downs
- On-Suite Guest Bedroom
- Extra-Large Covered Back Porch
- Pull Down Attic Ladder with Attic Storage
- Complete Wrought Iron Fenced-In Back Yard
- Stone, Brick, and Stucco Elevation