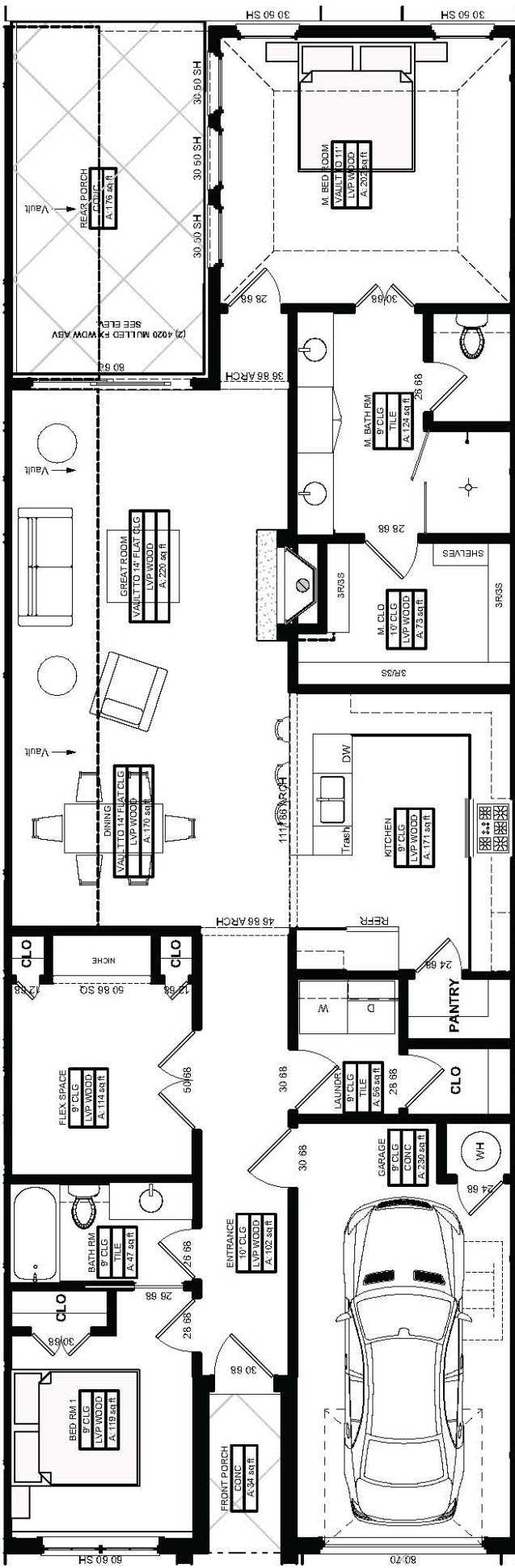


© 2022 These plans are the sole property of Spectacular Homes LLC. All Rights Reserved. No part of these plans may be reproduced or transmitted in any form or by any means, electronic or mechanical, including photocopy, without permission in writing by Spectacular Homes LLC. Violators will be prosecuted to the full extent of the law.



PLAN 'C'

1562 SF

276 SF Garage

2 Bedroom 2 Bath

1 Study/Flex Room

Outstanding Features

- Built By Award Winning Spectacular Homes
- Covered Front Porch
- 14' Vaulted Living Space
- Open Floor Plan
- Large Granite Top Kitchen
- Large Walk-in Pantry
- Luxury Vinyl Wood Look Flooring Throughout
- Large 73sqft Walk-in Master Closet.
- 3 Rows/3 Seasons Closet Pull Downs
- On-Suite Guest Bedroom
- Upper Transom Windows in Great Room for Added Light
- Extra-Large Vaulted Covered Back Porch
- Pull Down Attic Ladder with Attic Storage
- Complete Wrought Iron Fenced-In Back Yard
- Stone, Brick, and Stucco Elevation



SPECTACULAR HOMES